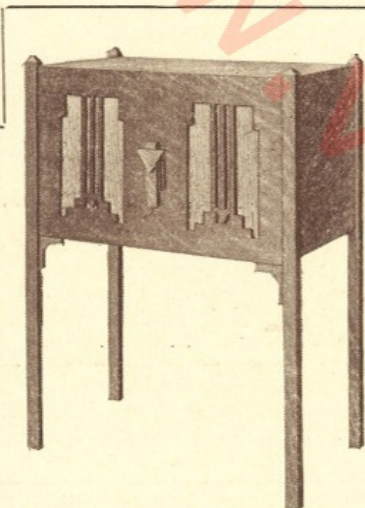


Valve Service Stations

Six-Sixty Valve Service Stations now exist in most of the important marketing centres of the country, and are at the service of all existing and potential radio owners to ensure the greatest possible satisfaction from all radio receivers. They not only supply and give all information regarding Six-Sixty products, but they operate the Six-Sixty Valve Service for the benefit of all existing users of radio receivers. This service consists primarily of genuine information and assistance in all valve problems, such



Six-Sixty Type 3-32 Chassis in alternative Console Cabinet No. 28. With accommodation for Radio Gramophone Equipment (not included).

Price, in Limed Oak

£12 12 0

(exclusive of batteries)

of radio which, other, calls for vice. For will satisfy you proved reception always obtainable by fitting one or more new or later type valves in old receivers.

more than any competent example, they as to the imitation nearly

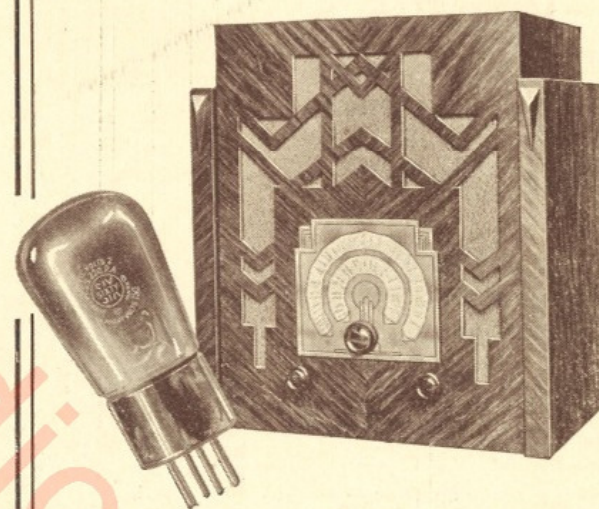
Whatever your interest in radio, therefore, you cannot but benefit by consulting your local Six-Sixty Valve Service Station on all radio matters. The address will be furnished immediately on request.

SIX-SIXTY RADIO Co. Ltd.

17-18 RATHBONE PLACE, OXFORD ST.
LONDON, W.1

Telephones: Museum 6116-7-8.

Telegrams: "Dullemita, Rath, London."

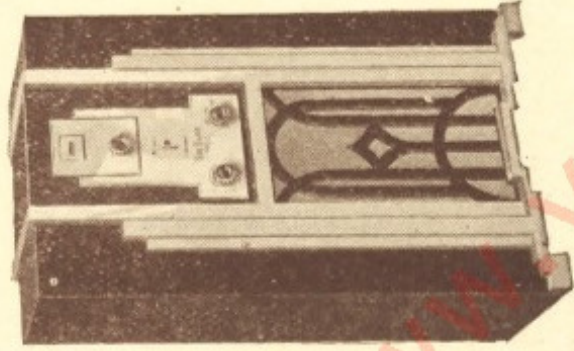


SIX-SIXTY

SIX-SIXTY MAKE THE BEST NEW SETS

Six-Sixty Receivers

TYPE C.K.



Type C.K.-4 Receiver

Price £8 15 0

Exclusive of Batteries.

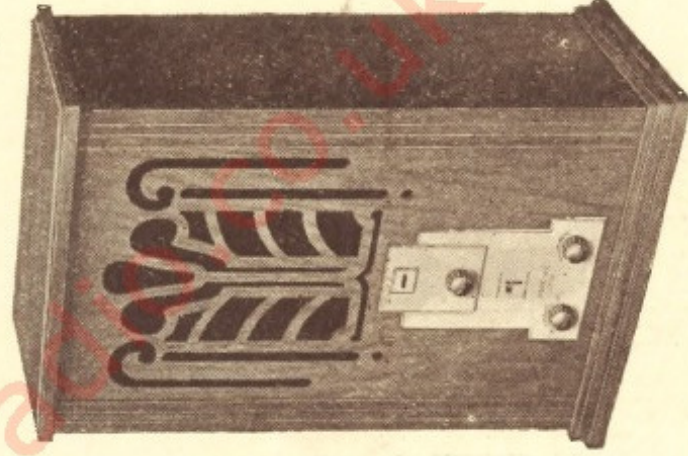
is a special feature, as is the tuning scale printed with station names, magnified by an optical lens for easy vision.

The C.K.-4 is in a handsome ebonised and sycamore cabinet; the C.K.-3 is similar, but in a walnut finished cabinet.

The chassis may be had separately for fitting in various alternative cabinets which are available.

Price, C.K. Chassis only, £5 17 6 (excluding Speaker)

These battery Receivers embody a modern 3-Valve Circuit including a band pass "Pre-Selector" stage, Screened Grid, Detector, and Pentode Output Valves of the latest high efficiency low consumption types. They are fitted with very fine balanced armature loud-speakers and give good range, selectivity and a most pleasing tone. Provision is made for a gramophone pick-up and additional loud-speakers. Gramophone volume control



Type C.K.-3 Receiver.

Price £8 15 0.

Exclusive of Batteries.

Further particulars on request.

THE CORRECT SIX-SIXTY B.V.A. VALVES, FOR VARIOUS POSITIONS IN RADIO RECEIVERS :

H.F. STAGES.

For all modern Receivers using Screen Grid H.F. valves where maximum amplification is desired ...
For Multi S.G. H.F. Stage Receivers and as replacements ...
For Battery Receivers using Multi-mu S.G. Valves ...
For Triode H.F. Stages (as used in many sets, especially portable Receivers) ...
For A.C. Mains Receivers using Multi-mu S.G. Valves ...

DETECTOR STAGES.

General purpose Detector Valves for all sets when followed by Transformer coupling ...
For Detector Stages followed by Resistance Capacity Coupling ...
For use as Detector in local or regional Receivers, also as special power Grid Detector ...
Combined First Detector and Oscillator for use in Supersonic Heterodyne Receivers ...

L.F. AMPLIFIER STAGES.

Ideal Valves for the first L.F. Stages of Portable Receivers ...
For use in the first L.F. Stages of other Receivers ...

OUTPUT STAGES (POWER VALVES).

For use in Receivers having a moderate output or as the first L.F. Stage in local and regional Receivers ...

OUTPUT STAGES (SUPER POWER VALVES).

For use in the last stage of powerful Receivers. These Valves will handle large outputs without distortion ...

OUTPUT STAGES (PENTODE).

Special Pentode Output Valves capable of enormous amplification and large, undistorted output. When using these Valves no intermediate L.F. Stages are required between the Detector and the Pentode Valve ...

RECTIFYING VALVES.

Full wave Rectifying Valve, suitable for an H.T. output up to 60 m/a. at an applied R.M.S. voltage of 250 volts ...

Full wave Rectifying Valve as above, but suitable for an output up to 120 m/a. at an applied R.M.S. voltage of 350 volts ...

Full wave Rectifying Valve as above, but with an output of 120 m/a. at an applied R.M.S. voltage of 500 volts ...

IMPORTANT.—When alternative types of valves are mentioned it is possible that of these one is more suitable than the others according to the receiver used, and the conditions under which it operates. Six-Sixty Valve Service Stations throughout the country will be pleased to advise on and demonstrate the alternative on request at any time.

*Can be supplied Metallised. †Directly Heated Valve. ‡6-v filament Valve

VALVES FOR BATTERY OPERATED SETS.

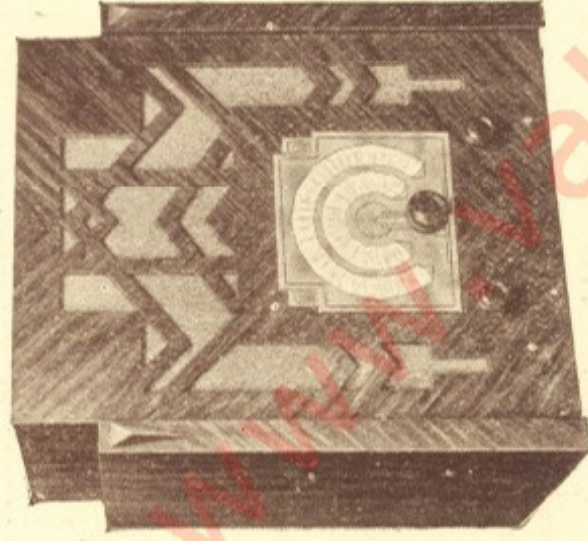
VALVES FOR A.C. MAINS SETS.

2 Volt.		4 Volt.		6 Volt.			
Type.	Price.	Type.	Price.	Type.	Price.	Type.	Price.
218 S.G.*	16/6	4075 S.G.	20/-	6075 S.G.	20/-	{ 4X S.G. A.C.*	
215 S.G.*	16/6	—	—	—	—	{ 4Y S.G. A.C.*	19/-
215V S.G.*	16/6	—	—	—	—	{ 4 S.G. A.C.*	19/-
{ 210 H.F.	7/-	4075 H.F.	8/6	6075 H.F.	8/6	{ 4 G.P. A.C.*	13/6
210 H.L.*	—	—	—	—	—	{ 4 M.M. A.C.*	19/-
210 H.L.*	7/-	4075 H.F.	8/6	6075 H.F.	8/6	{ 4 G.P. A.C.*	13/6
210 H.F.	7/-	4075 R.C.	8/6	6075 R.C.	8/6	{ 4 D.X. A.C.*	13/6
210 R.C.	7/-	410D.	8/6	610 D.	8/6	{ 4 L. A.C.	15/-
210 D.*	7/-	—	—	—	—	—	—
210 D.G.	20/-	—	—	—	—	—	—
210 H.L.*	7/-	4075 H.F.	8/6	6075 H.F.	8/6	—	—
210 D.*	7/-	410 D.	8/6	610 D.	8/6	{ 4 G.P. A.C.*	13/6
210 L.F.	—	—	—	—	—	{ 4 L. A.C.	15/-
{ 220 P.	8/9	410 P.	10/6	610 P.	10/6	{ 4 L. A.C.	15/-
220 P.A.	8/9	—	—	—	—	{ 4 P. A.C.	15/-
{ 220 S.P.	12/-	420 S.P.	13/6	{ 625 S.P.	13/6	{ 4 S.P. A.C.	17/6
240 S.P.	12/-	—	—	{ 625 S.P.A.	13/6	{ H.V. 4/1†	16/-
—	—	—	—	—	—	{ H.V. 4/2†	17/6
—	—	—	—	—	—	{ H.V. 6/5‡	30/-
220 Pen.	17/6	415 P.P.	17/6	617 P.P.	17/6	{ 415 P.P.†	17/6
230 P.P.	17/6	—	—	—	—	{ 4 Pen. M.‡	20/-
—	—	—	—	—	—	{ 4 Pen. A.C.	20/-

W.462 12/6
W.120/350 15/-
W.120/500 20/-

Six-Sixty Receivers

TYPE 3-32 CHASSISSET



Type 3-32 Chassisset in Standard (No. 21)

Cabinet, Price £10 10 0
(Exclusive of Batteries)

Stool, if required, 17/6

In unusual power, range and selectivity in conjunction with delightfully easy operation.

Moving Coil Speakers (permanent magnet type) are fitted to all models. The two cabinets illustrated here are in finely finished walnut.



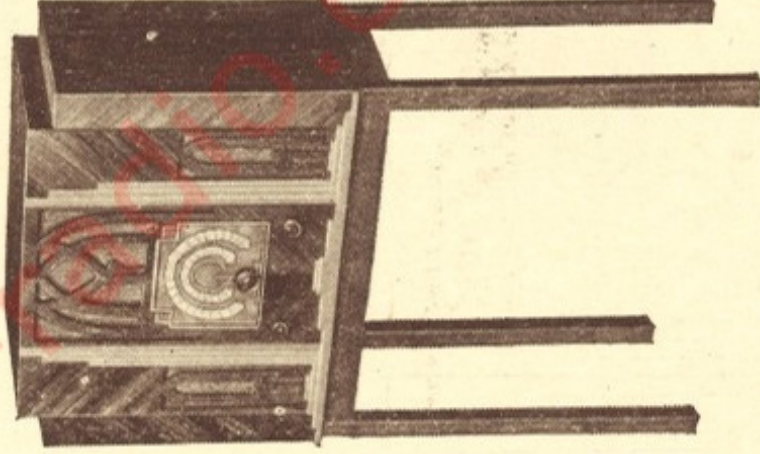
The Type 3-32 chassisset is also available in chassis form.

Price, Type 3-32 Chassis only, £8 17 6
including P.M. Moving Coil Speaker and Dial.

O

The Type 3-32 Chassissets are the most advanced examples of radio practice, and comprise a "Pre-Selector" band-pass tuning stage and Screened Grid, Detector and Pentode Valves, both chassis and valves being designed to work in conjunction.

Such notable features as automatic grid bias and voltage regulating resistances are incorporated; also combined volume and reaction controls, a special tuning dial, and many other exclusive features which result



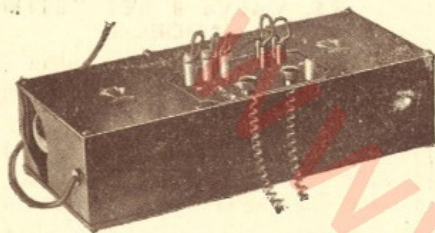
Type 3-32 Chassisset in Cabinet No. 24. Price £11 11 0

(Exclusive of Batteries)
Stool, if required, 21/-

O

Further particulars on request.

SIX-SIXTY VALVES MAKE OLD SETS BETTER
SIX-SIXTY MAKE THE BEST NEW SETS



S.S. POWER UNIT.

This Power Unit is fitted with a full-wave rectifying valve and gives an adequate power output for modern high efficiency valves, in sets using up to four valves.

A total H.T. current of 40 milliamperes is available with a maximum of 12 milliamperes on the intermediate tapings.

H.T. tapings of 60, 75, 100, 120, 150 and 200 volts are provided and grid bias values of 1.5, 3.0, 4.5, 8, 15 and 20 volts. Grid bias is on the automatic principle and any Three H.T. or two G.B. tapings can be used simultaneously. For 200/240 volts, 40/100 cycles, A.C. Mains.

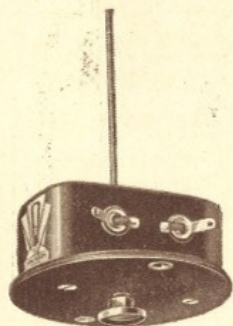
Dimensions : 13 by 5½ by 4 ins., including wander plugs which is of similar size to the average H.T. battery.

Price £6 6 0

S.S. VALVE SCREEN

A most efficient form of screen for use with screen grid detector valves. The use of these screens greatly simplifies and cheapens the construction of new Receivers, and will often greatly improve existing sets.

Price 1/3 each.



S.S. JUNIOR CONE UNIT.

This has been designed for those requiring a cheaper Unit than the Standard model ; gives a most satisfying performance and, unlike most Units of this type, is totally enclosed.

Price 4/6.



S.S. STANDARD CONE UNIT.

Extremely popular with those requiring unfailing reliability, light weight, maximum sensitivity and purity of volume, suitable for sets up to five valves. The Unit is mounted directly on to the Speaker fret.

Price 10/-.



S.S. VALVE & SET TESTER MODEL 3.

This instrument enables valves to be tested for filament current, filament emission and general condition, also diagnosing most of the causes of failure. The Tester is fitted with a D.C. and A.C. voltmeter for L.T. and heater voltages, a D.C. and A.C. ammeter, D.C. moving coil, 1,000 ohms per volt, volt meter to read G.B. and H.T. voltages, and a moving coil milliammeter for emission and H.T. consumption.

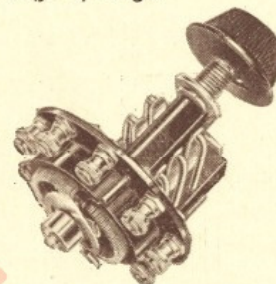
The Tester is also fitted with extension cords which may be plugged into the Receiver to test valves under working conditions, or to determine the condition of the set itself by testing stage by stage.

Price £12 12 0

S.S. MULTISTAT.

This is three components in one, being a radio and gramophone volume control and a Radio/off/Gramophone switch, thus lessening the number of controls on the panel of the Receiver.

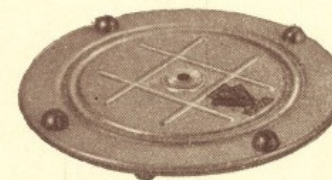
Battery Model. Price 8/9.



S.S. TURNTABLE.

Ideal Turntable for all portable and transportation Receivers.

Price 5/-.



S.S. VALVE ADAPTORS.

5/4-pin model enables the user to replace D.C. with A.C. valves working from the mains supply by merely plugging into the existing sockets and attaching the parallel wires already connected to the mains drive.

Price 2/- each.

4/5 pin adaptor converts A.C. sets for use with D.C. valves.

Price 1/6 each.

Pentode base adaptor permits the use of 5-pin Pentode valves (also 5-pin D.G. and mains valves) in 4-pin holders.

Price 1/9 each.

GRAMOPHONE PICK-UP ATTACHMENTS.

Enables Gramophone records to be reproduced by receivers not originally designed for this purpose.

5-pin type for A.C., or 4-pin type for D.C.

Price 2/- each.

SIX-SIXTY RADIO Co. Ltd., 17-18 Rathbone Place, Oxford St., London, W.1