



BY APPOINTMENT  
TO HER MAJESTY THE QUEEN  
RADIO MANUFACTURERS  
ROBERTS RADIO CO. LTD.

PINNICKS RADIO & TELEVISION CO. LTD.  
289, ALCESTER ROAD SOUTH  
BIRMINGHAM, 14.

# The Roberts

## RM30

VHF, MW & LW TRANSISTOR MAINS RADIO

### TECHNICAL DATA



### Specification

#### SEMICONDUCTORS

2 transistors  
2 integrated circuits  
2 diodes  
1 bridge rectifier

#### WAVE BAND COVERAGE

VHF 87.5-104.5 MHz  
MW 525-1630 kHz  
LW 150-265 kHz

#### POWER OUTPUT

2W nominal, continuous sinewave

#### LOUDSPEAKER

136 x 70 mm, 12 ohms impedance

#### POWER SUPPLY

240 V 50 Hz mains

### Dismantling

1. Remove volume and tuning control knobs and three screws securing cabinet back, disconnect telescopic aerial.
2. Remove six screws on underside of cabinet.
3. The main chassis and power unit chassis may then be removed from rear of cabinet.

## SETTING UP VHF TUNING VOLTAGE

(Note : Voltages are positive with respect to tuner can *not* chassis.)

1. Slacken screw on drive spindle of R8.
2. Set pointer to HF end of scale using TUNING control.
3. Set voltage on TR1 collector to 12.3 Volts by means of R2.
4. Adjust R8 by means of screwdriver slot at rear of control to give 12 Volts on R8 slider.
5. Tighten screw on R8 drive spindle.
6. Check that voltage on slider of R8 has remained at 12 Volts. Correct small errors (not greater than 0.1 Volts) by means of R2.
7. Set pointer to LF end of scale using TUNING control.
8. Adjust R9 to give 2 Volts on slider of R8.
9. Repeat operations 6-8 if necessary.

## ALIGNMENT

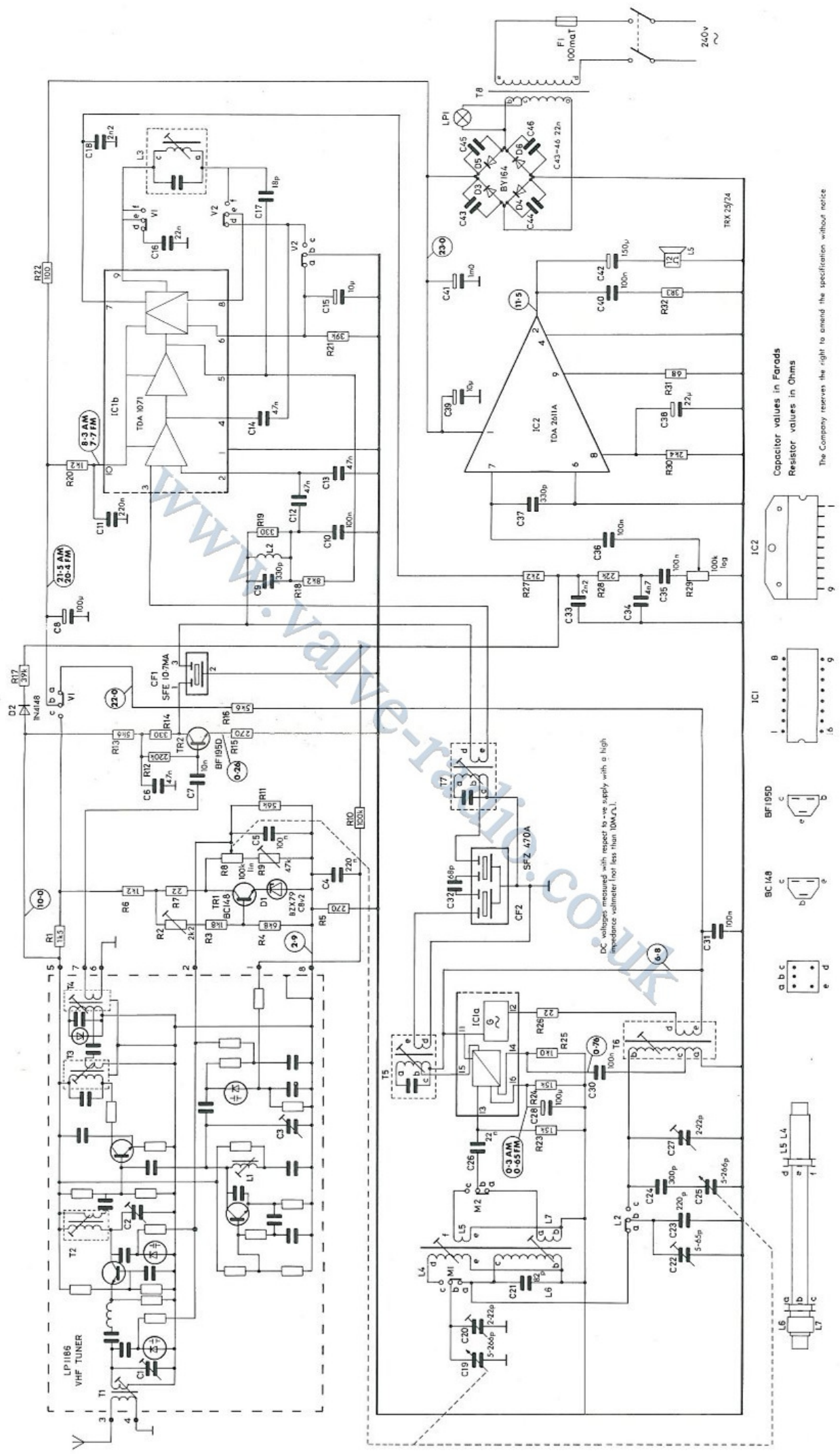
ENSURE :— With Gang at max pointer coincides with datum marks at right-hand end of scale

WAVE-BAND	POINTER	SWEEP/SIGNAL GENERATOR			INDICATOR	CONNECT	ADJUST	INDICATION
		INJECT	FREQUENCY	MOD				
1 MW	HF Cal Mark	Across L4	470 kHz	25 kHz Deviation	O'scope Sensitivity 100mV/Div	Junction R27 & 28 & Chassis	T5 & T7	Max O/P & Symmetry (Adjust I/P to maintain picture height of 4 Divs)
2 MW	HF Cal Mark	Via Coupling Loop	1500 kHz	30% AM	As 1	As 1	C27 & C20	Max O/P
3 MW	LF Cal Mark	As 2	560 kHz	As 2	As 1	As 1	T6 & L4	Max O/P
4 LW	HF Cal Mark	As 2	261 kHz	As 2	As 1	As 1	C22	Max O/P
5 LW	LF Cal Mark	As 2	156 kHz	As 2	As 1	As 1	L6	Max O/P
6 VHF	RH end	Aerial I/P tag	Approx. 87.5 MHz	1 MHz Deviation	O'scope Sensitivity 200 mv/Div	As 1	L3*	Symmetrical S curve. (Adjust I/P to give picture height of 5 Divs)

\*Note for step 6 S/C C15 (Disable Interstation Muting) & S/C C4 (Disable AFC).

The FM Tuner unit is prealigned in the factory and, since specialised equipment is required for this purpose, no instructions are given. In the event of any fault, remove the complete module and return to Roberts Radio for replacement.

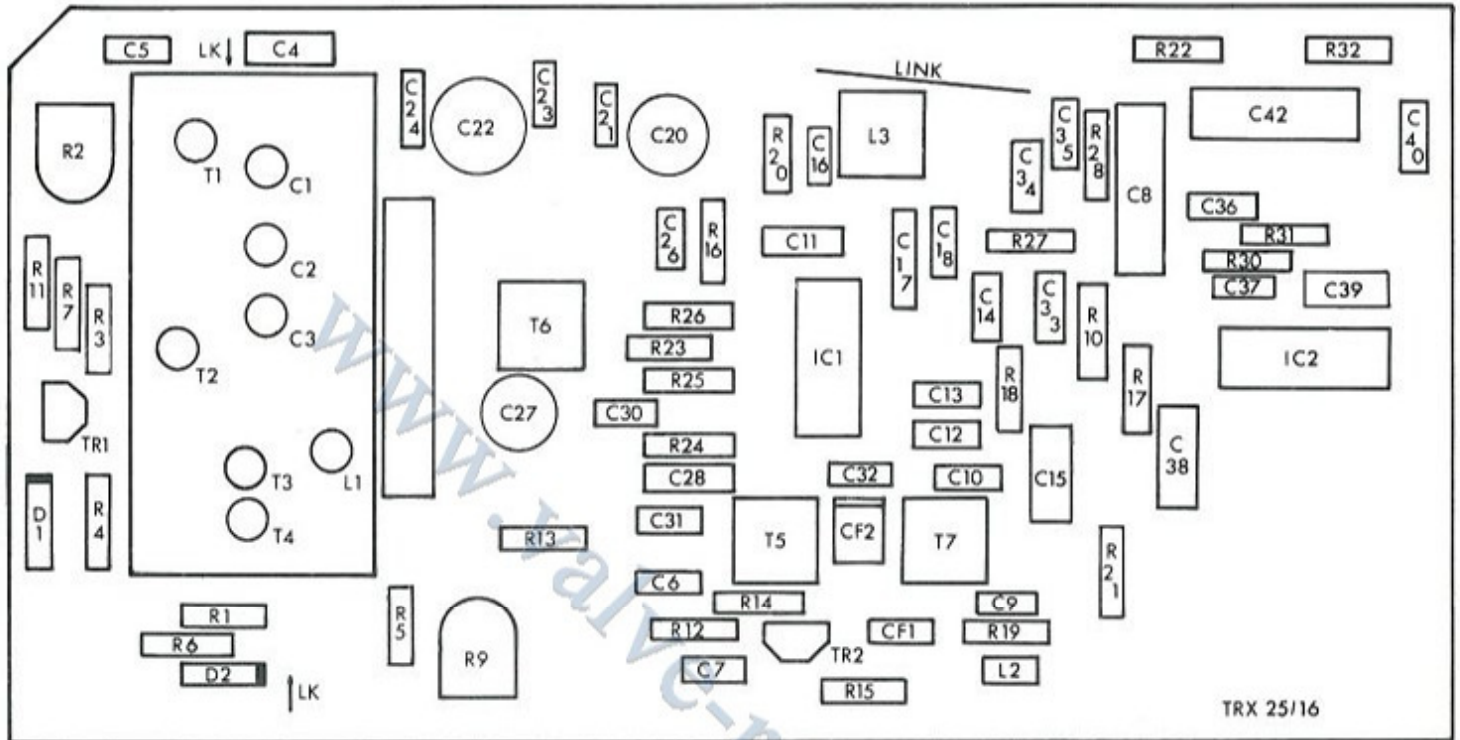
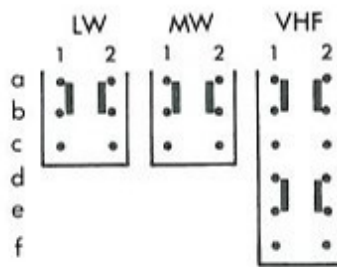
**CIRCUIT DIAGRAM**



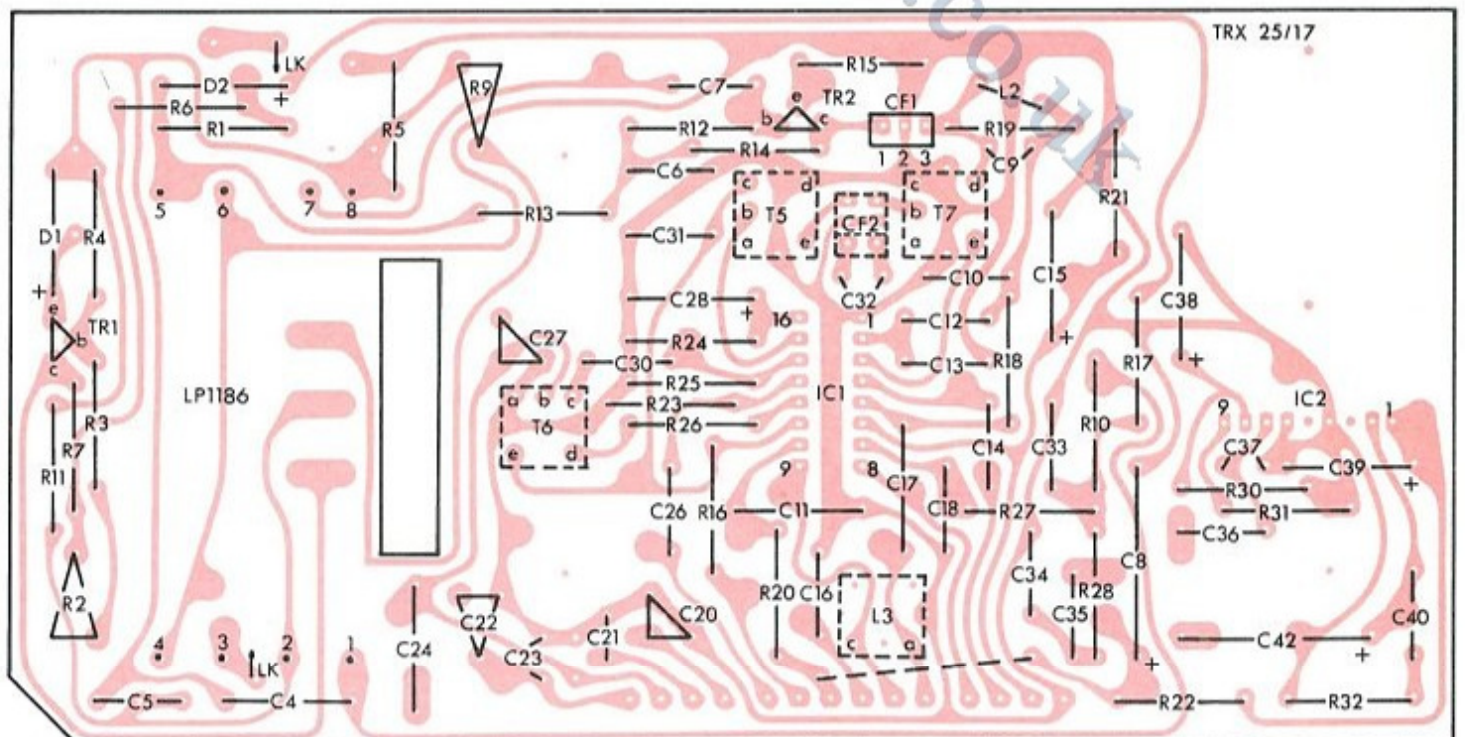
Capacitor values in Farads  
Resistor values in Ohms

The Company reserves the right to amend the specification without notice.

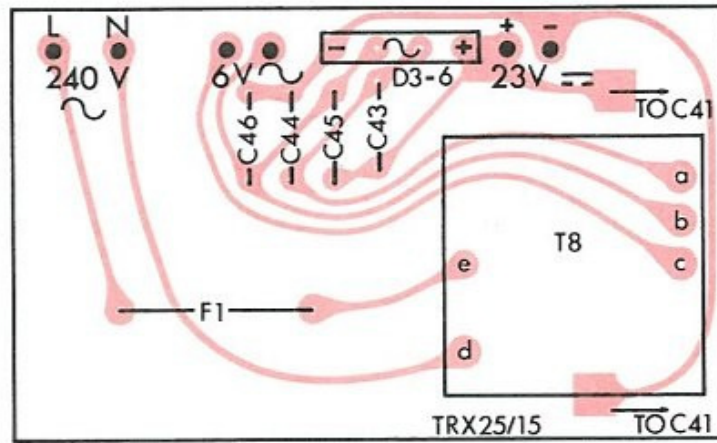
# MAIN BOARD LAYOUT (TOPSIDE)



# MAIN BOARD LAYOUT (UNDERSIDE)



## POWER SUPPLY BOARD LAYOUT



## CORD DRIVE DIAGRAM

