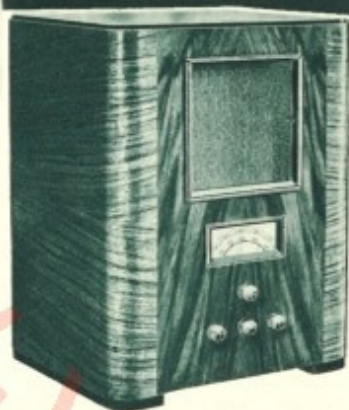


● INVICTA ●  
BATTERY MODELS

**INVICTA Bandpass T**

This is a battery receiver de luxe. Powerful with a wide range of programmes, bandpass tuning is incorporated ensuring a high degree of selectivity. The cabinet illustrated is of the same high quality in construction and finish as used in the more expensive mains models. The use of the latest Mullard VP2, SP2, and PM22A low consumption pentode valves puts this receiver well in the forefront of modern design. A high-grade permanent magnet moving coil speaker ensures faithful reproduction of both music and speech.



£8 17 6 or on H.P. 10/- deposit and 11 payments of 18/-

**INVICTA D3 Series**

These receivers, although moderate in price, are first-class quality productions. The range of stations obtainable, although not so extensive as with the Model T, is nevertheless well above that of the average inexpensive three valve receiver. All prices given are inclusive of batteries, and with the exception of the Model D3 at £4 10 0 all models incorporate moving coil speakers. Cabinets are as illustrated. Mullard PM1HL, PM1HL and PM2A valves are used.



D3 & D3MC.

- D3 (moving iron speaker) .. £4 10 0  
or 10/- deposit and 11 payments of 8/6
- D3MC (moving coil speaker) .. £5 12 6  
or 10/9 deposit and 11 payments of 10/9
- DBMC (as D3MC but black and chromium cabinet) .. .. £5 17 6  
or 11/3 deposit and 11 payments of 11/3

DBMC



Made by **ORR RADIO LTD.**  
SOLE DISTRIBUTORS  
**UNITED RADIO MANUFACTURERS LTD.**  
79a PARKHURST RD., LONDON, N.7  
PHONE NORTH 3883 (4 lines)

**1935 RECEIVERS**  
BATTERY & MAINS OPERATED



MADE BY  
**ORR RADIO**



BEAUTIFUL IN APPEARANCE ●

SUPREME IN PERFORMANCE ●

## — INVICTA —

Beauty in cabinet work is only one of the features of the 1935 Invicta receivers. The same degree of craftsmanship and the same sturdy characteristics are apparent throughout—from design to actual construction. Particular attention has been paid to elimination of the unwanted noises and hum so often associated with powerful mains Superhet receivers. Success in this direction and careful balancing of the output stage and loudspeaker has resulted in exceptional fidelity of tone—Hear an Invicta and judge for yourself.

### MODEL 635. SIX-VALVE (inc. Rectifier) A.C. SUPERHET

The Invicta 635 (illustrated) is a fine example of modern radio engineering both in design and construction. Six Mullard valves, including rectifier, are employed in an 8-stage Superheterodyne circuit in such fashion as to surpass in performance the multi-valved Superhets of a short time ago. Quality of reproduction has been the first consideration in the production of this receiver, and this aim has been achieved without sacrificing the power and selectivity necessary to bring the listener a truly wide range of British and Foreign programmes.

Delayed Automatic Volume Control is employed, overcoming the annoyance so often caused by "fading" of distant stations, yet ensuring that sensitivity is not impaired.

Manual tone and volume controls are provided so that reproduction can be adjusted to individual taste. These controls are operative on a Gramophone pickup, which is provided for. Provision is also made for extension speaker. Valves used are Mullard FC4, VP4, 2D4, 354V, Pen 4VA, and IW3.

**£12 19 6** or on H.P. £1 Deposit and 11 Payments of 25/-

### DUOVOX MODEL 635D

#### Twin Speaker Superhet

The Duovox 635D is a six-valve superheterodyne receiver employing the same chassis as the 635, but fitted with Dual matched moving coil speakers. The use of these two speakers has resulted in the attainment of quality reproduction over the whole musical scale to an extent impossible with a single speaker receiver.

**£15 0 0** or on H.P. 25/- Deposit and 11 Payments of 29/-



### MULTIMAINS SUPERHET

For A.C. or D.C. Mains.

This model is a four-valve (inc. Rectifier) superhet with five tuned circuits. The cabinet is similar in appearance to the 635 illustrated and is fitted with the same high-grade moving coil speaker. Selective and powerful, the Multimains operates equally well on A.C. or D.C. mains without alteration.

Single knob tuning is employed; making operation absolutely simple. A hum neutralizing coil is fitted to the speaker to eliminate any trace of mains hum.

*Valves used are Mullard Octode FC13 frequency changer, Mullard SP13 detector, Mullard Pen 26 output pentode and Mullard UR2 rectifier.*

**£10 15 0** inclusive of Royalties, or on H.P. 15/- Deposit & 11 Payments of 21/-



INVICTA MAINS SUPERHETS

MADE BY ORR RADIO