

SPECIFICATION

When ordering please state list number, L.N.8019

CABINET.	Polished Figured Walnut.
SELECTIVITY.	Two Sockets for Alternative Aerials.
VOLUME.	Single Control for Volume. Does not affect the tuning in any manner or "degang" the tuned circuits.
VALVES.	Metallised Screened-Grid Valve. Lissen SG.215. High Efficient Detector. Lissen HL.210. "Economy" Power Pentode. Lissen PT.225.
LOUD SPEAKER.	Pentode Impedance - Matched Four-Pole Balanced Armature and special Fabric Cone.
ACCUMULATOR.	Lissen 2-volt Glass.
H.T. BATTERY.	120-volt, Special with Grid Bias Tapping.
TUNING.	Single Dial, operating two tuned circuits with matched dual range shielded coils.
RANGES.	200-525 and 850-2,000 metres.

LISSEN LIMITED

Registered Office and Works :

**WORPLE RD., ISLEWORTH, MIDDLESEX
LONDON, ENGLAND**

TELEPHONE : HOUNSLOW 2361. 12 lines (Private Branch Exchange)

TELEGRAMS : INLAND - - - LISSENIUM PHONE LONDON
FOREIGN - - - LISSENIUM LONDON

Works : EDMONTON, N.18

1388-B-32

Announcing The NEW



LISSEN

THREE VALVE BATTERY OPERATED RECEIVER

LISSEN

3 valve Receiver

Single Dial Tuning.
Single Knob Volume Control.
Directly Calibrated in Wavelengths.
Metallised Screen Grid Valve.
Super Sensitive Detector Valve.
Economy Power Pentode Valve.

"ALL MAINS" PERFORMANCE WITH A BATTERY RECEIVER

HITHERTO the advantages of simplified control and a wide range of Programmes have only been available to users of the most expensive all mains receivers. Lissen decided that the battery set user should have a receiver which would "handle" in exactly the same manner and have all the refinements of the best of the mains receivers.

No equivalent battery-driven receiver has previously been available, because the consumption of H.T. current has always been so high in such sets that in the first place they would have been outside the reach of the listener without electrical power fitted in the home, and even if this were not so, the cost both initially and for upkeep would have been so prohibitive as to put such a receiver beyond the pocket of the average listener.

The result of an eight months' study of the problem by Lissen engineers, is the offering of this new battery-operated receiver.

It has all the characteristics of the most modern mains receiver. One knob tuning control, one knob volume control, Metallised Screened Grid Valve, Pentode Output, Impedance Matched Loud Speaker. Non-critical tuning and yet the most amazing

selectivity and range. Unlike other battery receivers it does not require expert handling to bring in the foreign stations. The unskilled members of the family can tune in most of the European programmes, free from interference, as easily as the local ones. It is only necessary to set the tuning scale to the wavelength of the station wanted and adjust the volume control. Station after Station can be received—each "clear cut"—free from interference, and all at full loud speaker strength.

THE TOTAL H.T. CURRENT TAKEN BY THE RECEIVER IS UNDER 10 MILLIAMPS.



PRICE COMPLETE
with
VALVES & BATTERIES
£8-17-6
or £1. deposit and
12 monthly payments
of 15/6

L I S S E N L I M I T E D I S L E W O R T H M I D D L E S E X

The
NEW
ISSSEN
3 VALVE
BATTERY
RECEIVER

Metallised Screened Grid Valve.

Economy Power Pentode Valve.

Single Knob Tuning.

An entirely new method of volume control with one knob.

Dial calibrated in wavelengths from 200-525 and 850-2,000 metres.

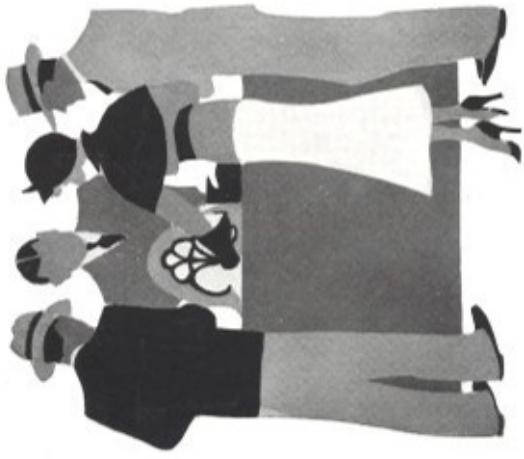
Metal chassis—circuit stable under all conditions.

Razor-edged selectivity.

Figured Walnut Cabinet.

**Non-critical
Tuning**

**As Easy to
handle as a
Gramophone**



**ASK YOUR DEALER
TO DEMONSTRATE
TO YOU THIS
WONDERFUL
RECEIVER**

Be critical... Be guided by your own analysis of its capabilities. Test it for range, ease of operation, selectivity, purity and volume. Consider its appearance. Try it against other receivers costing pounds more.

We feel sure that if you have no electric supply you cannot fail to choose this wonderful battery set.

Make this test yourself. Remove the aerial and earth leads from the receiver, place your finger on the aerial terminal and tune in the local station at full loud speaker volume.

